

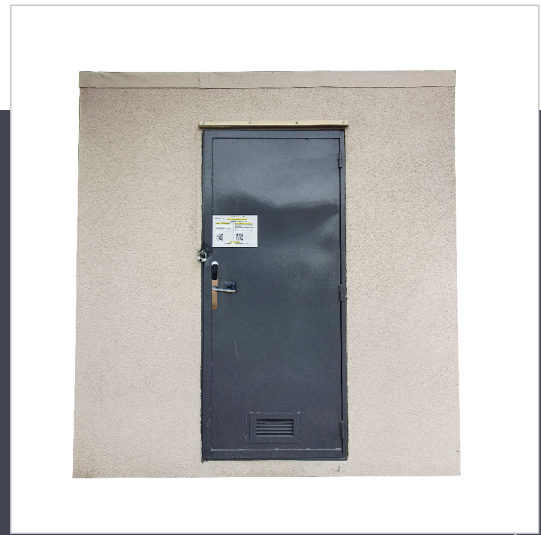
SecuPM solution

Monitoring the quality of interventions on the shared access point

SECURITY & CONNECT' RANGE

Millions of operations are successfully carried out each year on the shared fiber network. However, the quality of the connections must still be reinforced in order to perpetuate the existing infrastructures.

TETRADIS supports you in the follow-up of interventions on your sites to improve the quality of your network.

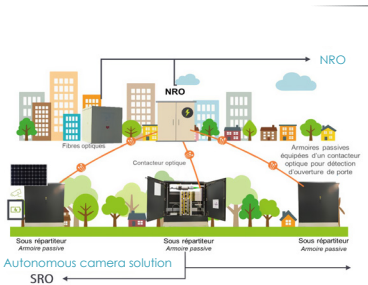


©TETRADIS - V 1.00 - 29/04/2022



Shelter equipped with a SecuPM solution

Technical specifications



- 1 Collection of data and information from the sites
- 2 Sending data
- 3 Data processing Alert management
- 4 Operational display Monitoring

CHARACTERISTICS

This solution allows the monitoring of the quality of interventions on the shared access point. It is based on several functional bricks:

1. The operator: who intervened, where and when?
2. The intervention: what was done? The quality of the intervention?
3. The sites: in what state are the sites?

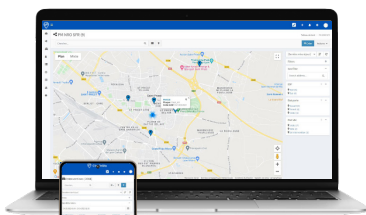
All **this information is centralized and transcribed into business data** to facilitate network operations.

The use of Artificial Intelligence (AI) allows us to go further, by refining the processing of collected data to improve their use (example: photos).

	Operator	Intervention	Sites
Access control system	✓		
Camera - video	✓	✓	✓
Camera - advanced functions		✓	✓
Door sensor		✓	✓
Additional sensors	✓	✓	✓
Interaction / cross-checking	✓	✓	✓
Monitoring			

AI analyse

Supervision interface



- Mapping of sites
- List of interventions

AVANTAGES

- Ensure the traceability of interventions on the various sites
- Guarantee the identification of the various participants on the interventions
- Follow in real time the state of the sites and in particular the position of the door
- Time-stamp and archive the data related to the interventions carried out
- Trigger alerts on detected anomalies (business rules)
- Raise a doubt in real time by visualizing the feedback from the various sensors and camera images
- Map the different customer sites

INSTALLATION AND COMMISSIONING

- Our solution is modular and allows you to choose the relevant functional bricks and define the operating mode.
- It adapts to all types of sites: street cabinets, shelters, connected or not to the electrical grid.
- It is easy and quick to deploy on your different sites (1/2 day).



STREET CABINET
compatible with the majority of cabinets on the market



SHELTERS
connected or not to the electrical grid



OTHER SITES
Custom installation, consult us.

SECURITY & CONNECT' RANGE

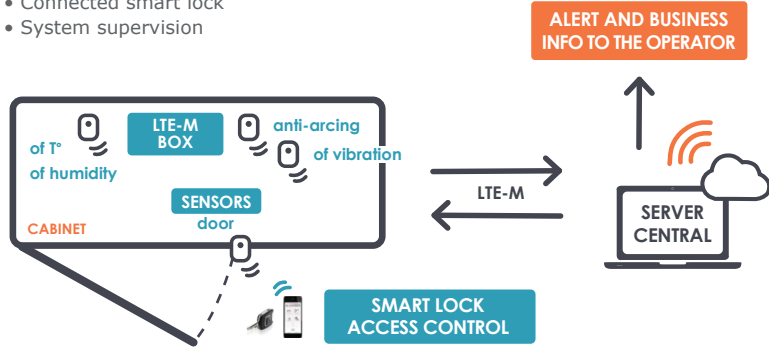
SecuPM - STREET CABINET



CHARACTERISTICS

The SecuPM solution for street cabinet applications consists of

- Door sensor
- Temperature, anti-pullout, vibration sensors, etc.
- CBL LTE-M IoT hub
- Connected smart lock
- System supervision



Technical specifications

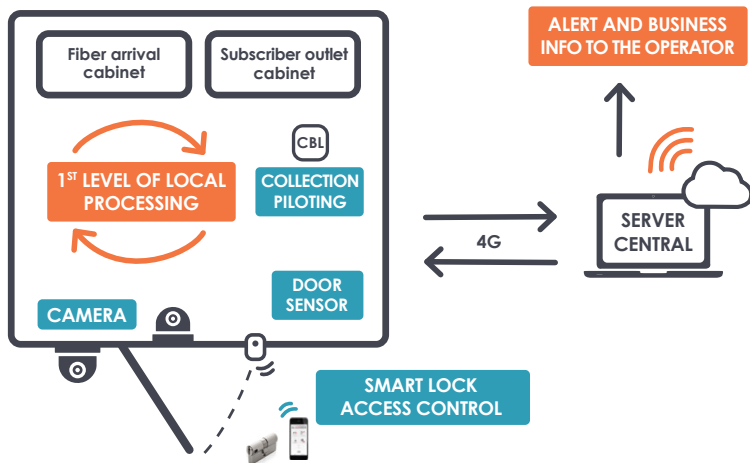
SecuPM - SHELTER



CHARACTERISTICS

The SecuPM solution for Shelter applications consists of :

- Video surveillance cameras (basic function, motion detection, line crossing, as required)
- Door sensor
- CBL LTE-M IoT hub
- Connected smart lock
- System supervision



OPTION : AUTONOMOUS SOLAR KIT

In the case of a optical sharing point not connected to the electrical grid, TETRADIS proposes the integration of photovoltaic panels to supply the SecuPM solution with energy.

- Sizing of the photovoltaic system
- Provision of a kit including all the necessary accessories (solar panel, fixing, mast, cables, battery, regulator).



We recommend our users before placing your product out, to make sure it exactly suitable for the intended use. TETRADIS can not be held responsible for any damage caused directly or indirectly by the use of these products. Specifications in this document are able to change without notice. Pictures are not contractual.